

EC 553

Communication Networks

Mohamed Khedr

www.aast.edu/~khedr

Grades

Load	Percentage	Date
7 th Week Exam	20%	Week of 1 Nov 2007
12 th Week Exam	10%	Week of 3 December 2007
Final Exam	40%	
Participation	10%	
Report and lab	20%	

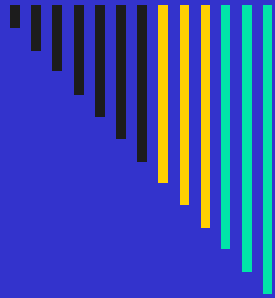
Textbook and website

- Textbook: B. Forouzan, Data Communications Networking. 3rd ed. New York: McGraw-Hill, 2004
- Website: www.aast.edu/~khedr

Syllabus

- Tentatively

Week 1	Overview
Week 2	Packet Switching
Week 3	IP addressing and subnetting
Week 4	Introduction to Routing concept
Week 5	Routing algorithms
Week 6	Routing protocols
Week 7	Multiple Access I
Week 8	Multiple access II
Week 9	LAN networks
Week 10	Token ring networks
Week 11	VOIP
Week 12	WLAN
Week 13	TCP
Week 14	Congestion control
Week 15	QOS



Overview of Data Communications and Networking

Figure 1.1 *Five components of data communication*

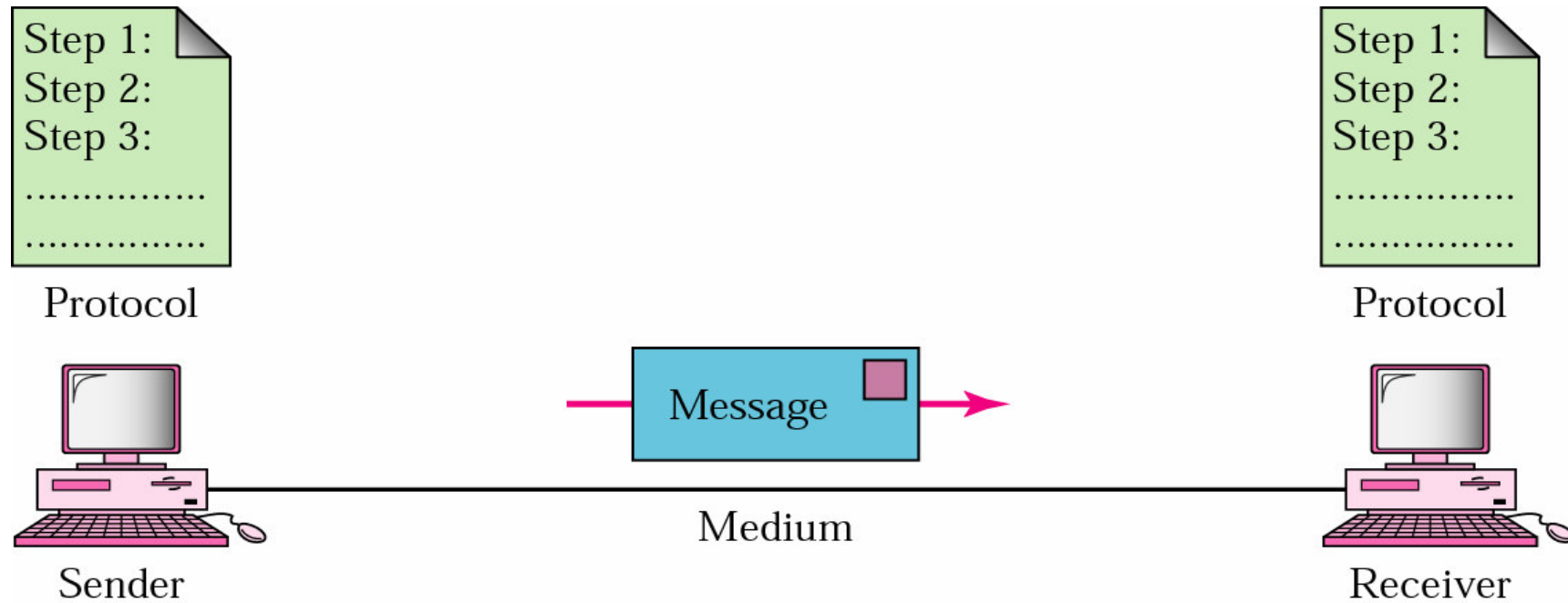


Figure 1.2 *Simplex*

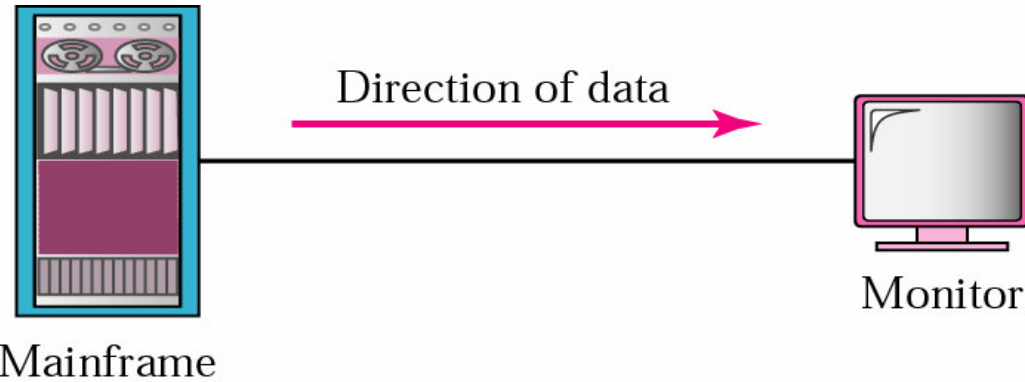


Figure 1.3 *Half-duplex*

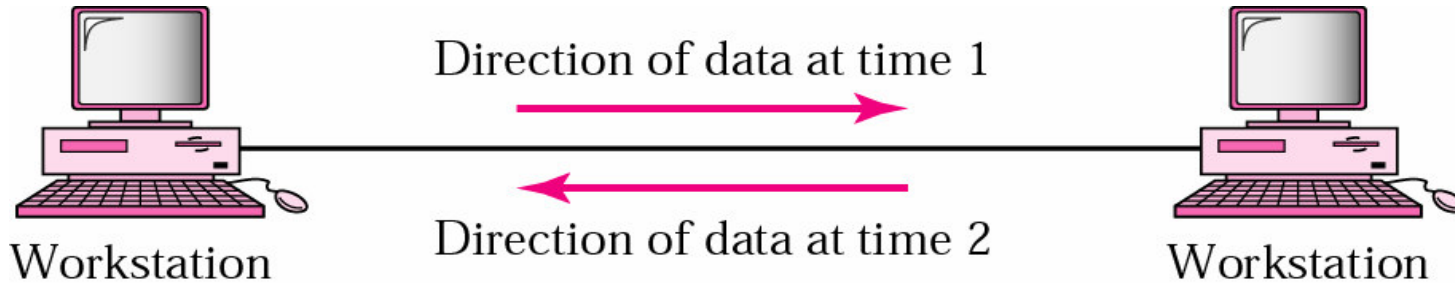


Figure 1.4 *Full-duplex*

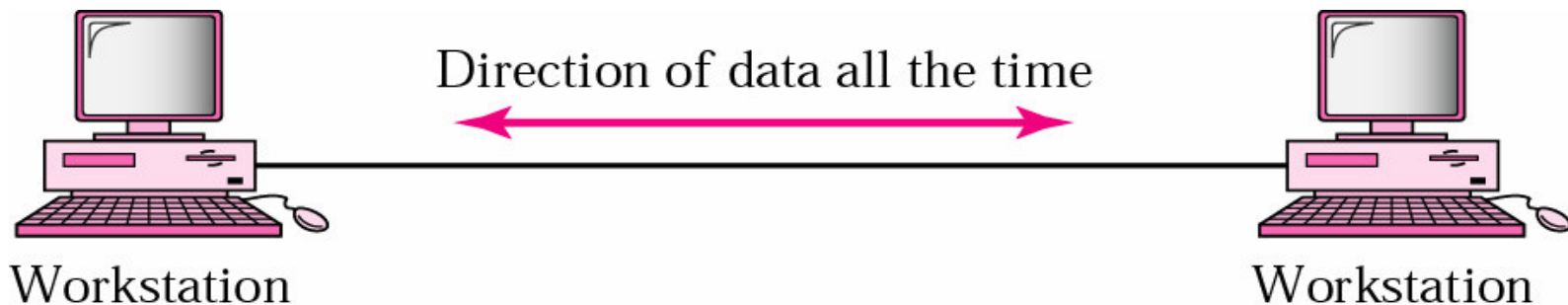


Figure 1.5 *Point-to-point connection*

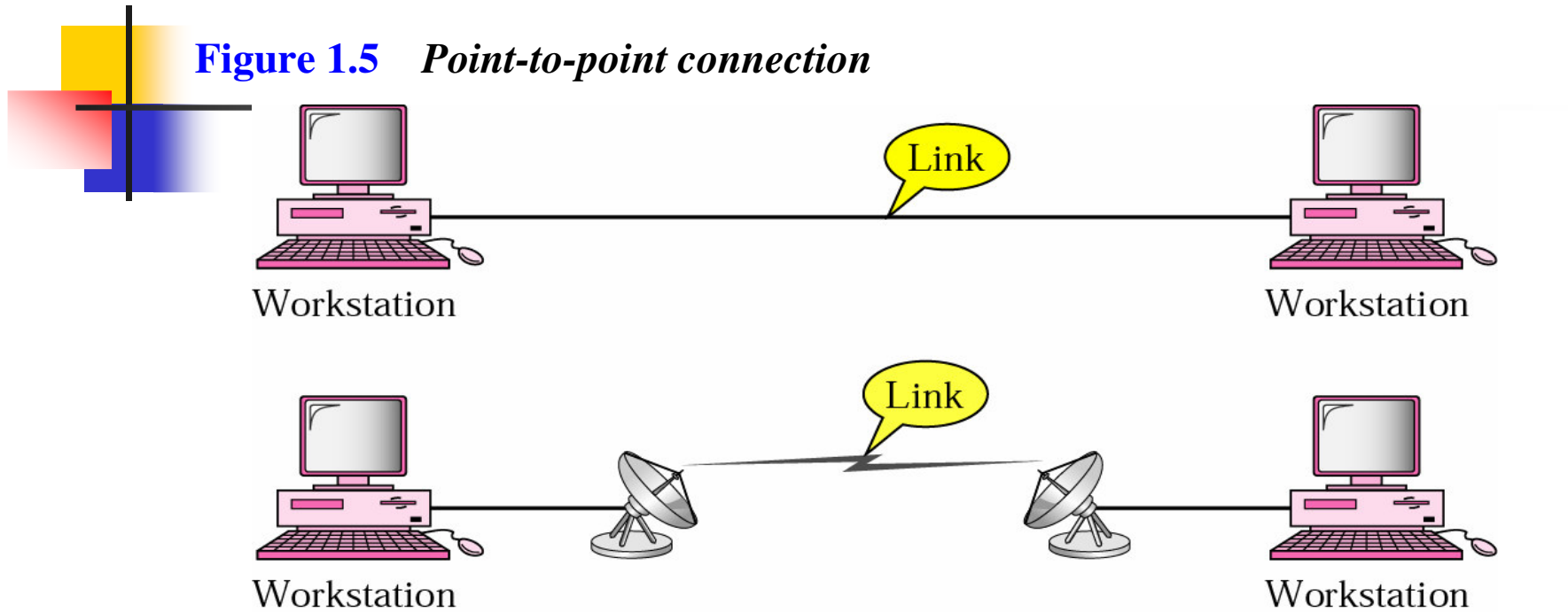


Figure 1.6 *Multipoint connection*

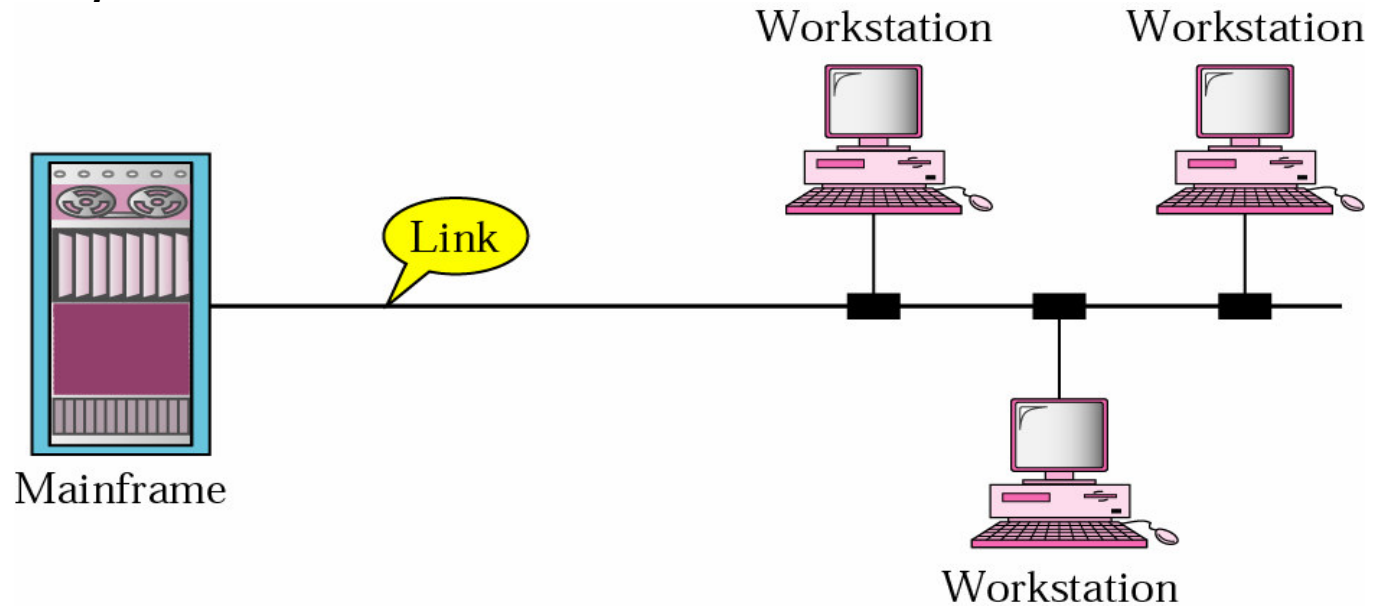


Figure 1.7 *Categories of topology*

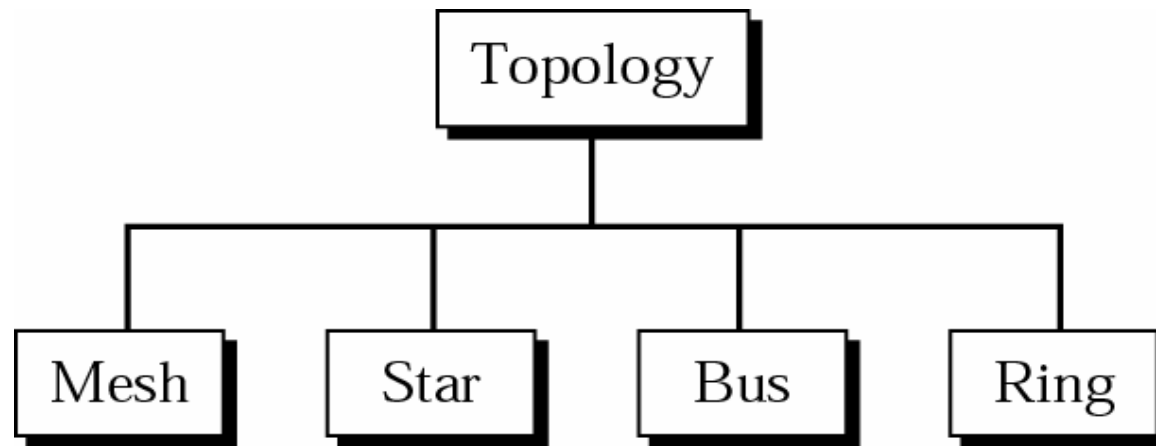


Figure 1.8 *Fully connected mesh topology (for five devices)*

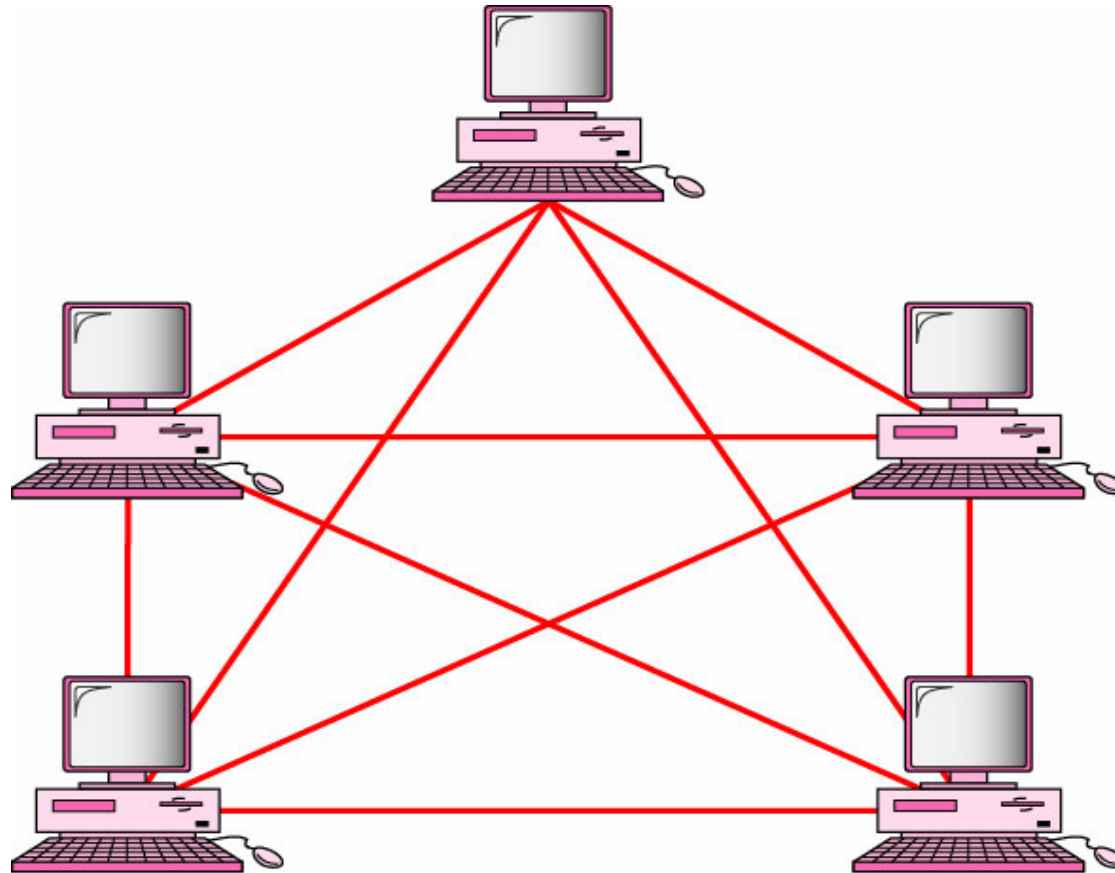


Figure 1.9 *Star topology*

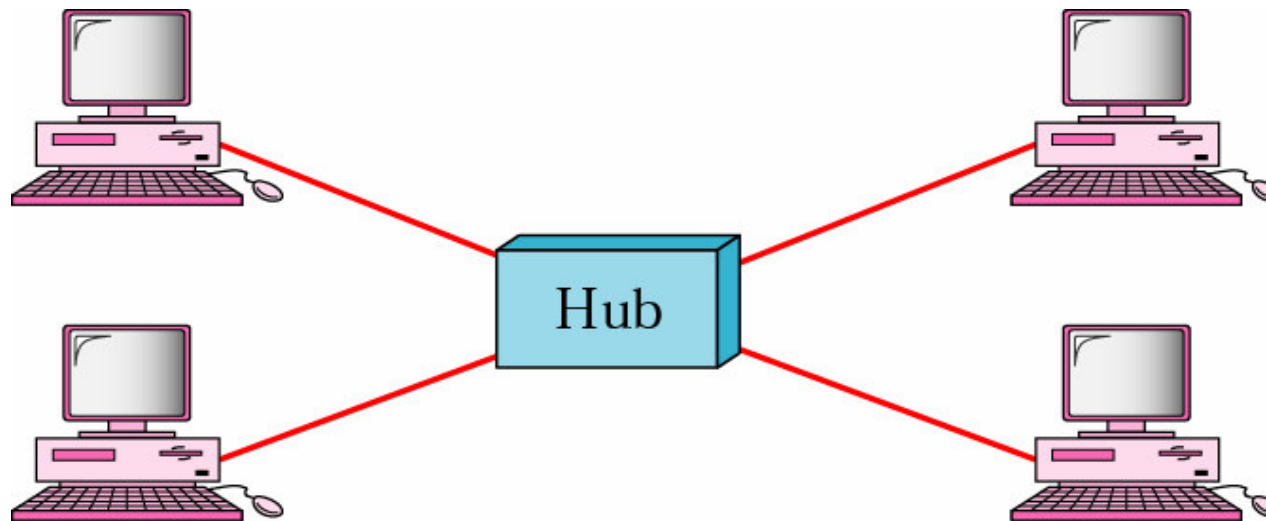


Figure 1.10 *Bus topology*

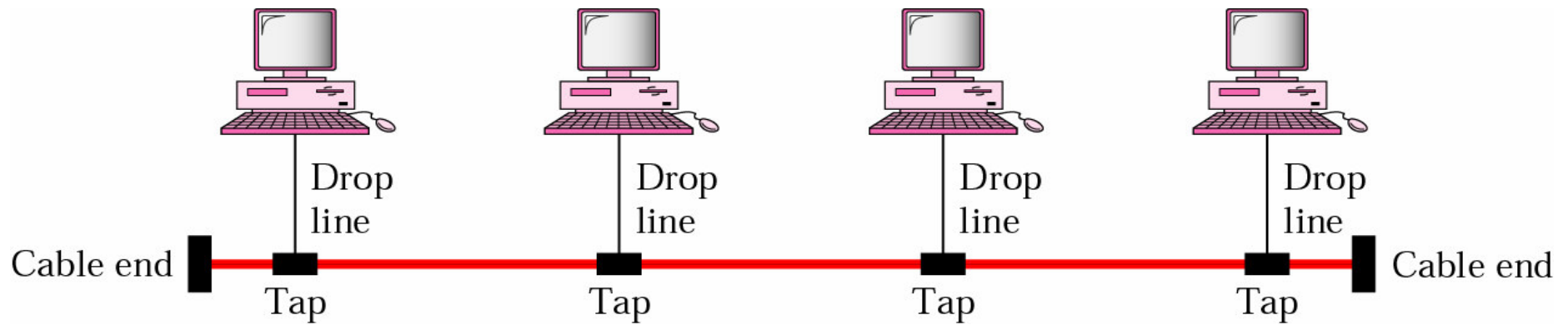


Figure 1.11 *Ring topology*

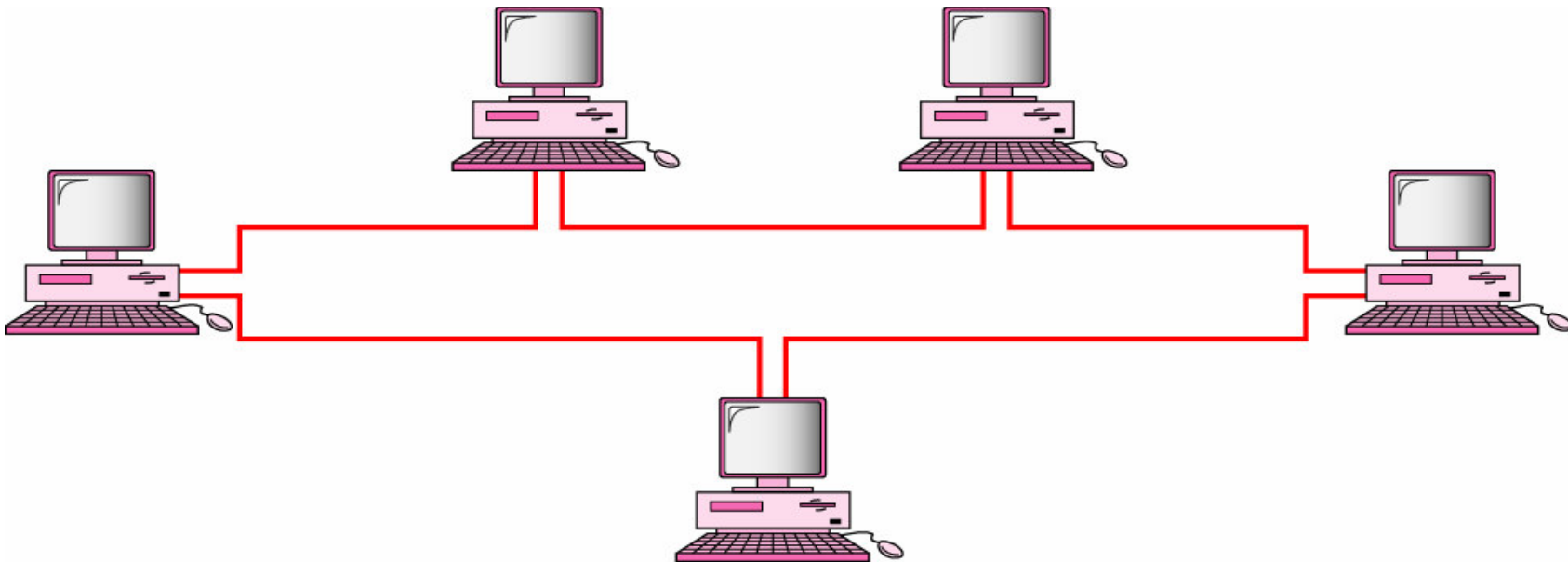


Figure 1.12 *Categories of networks*

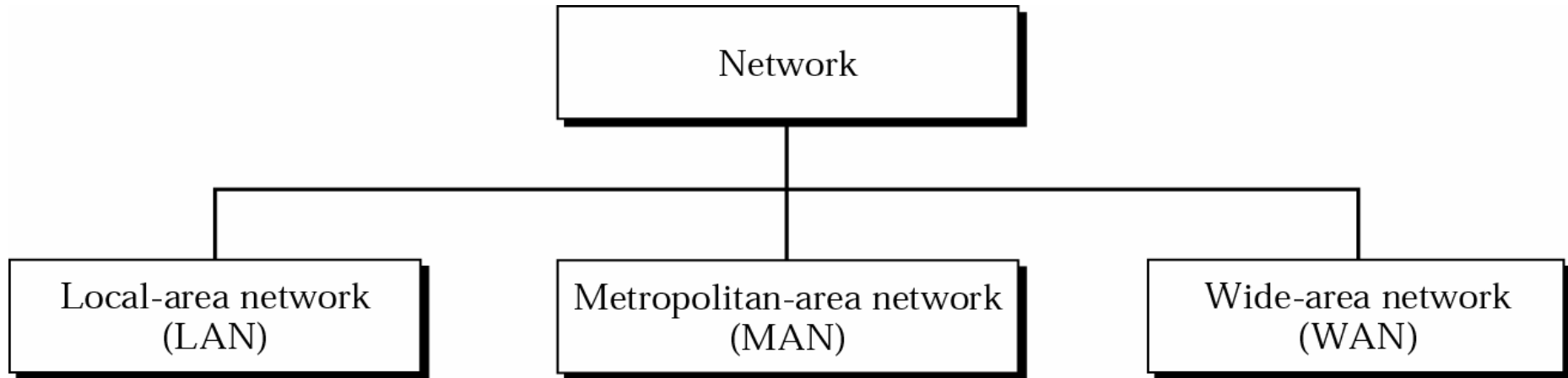
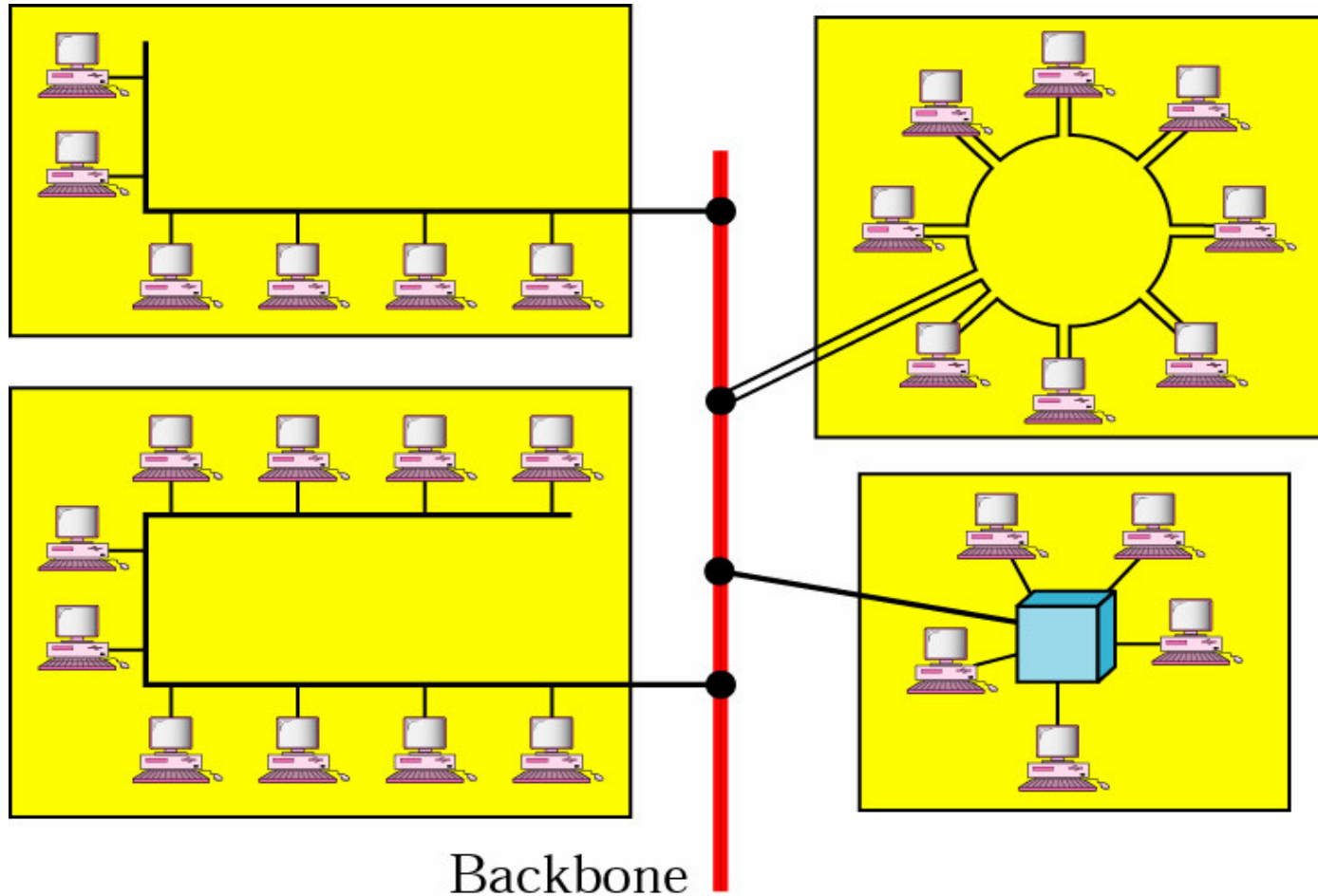


Figure 1.13 LAN



b. Multiple-building LAN

Figure 1.14 *MAN*

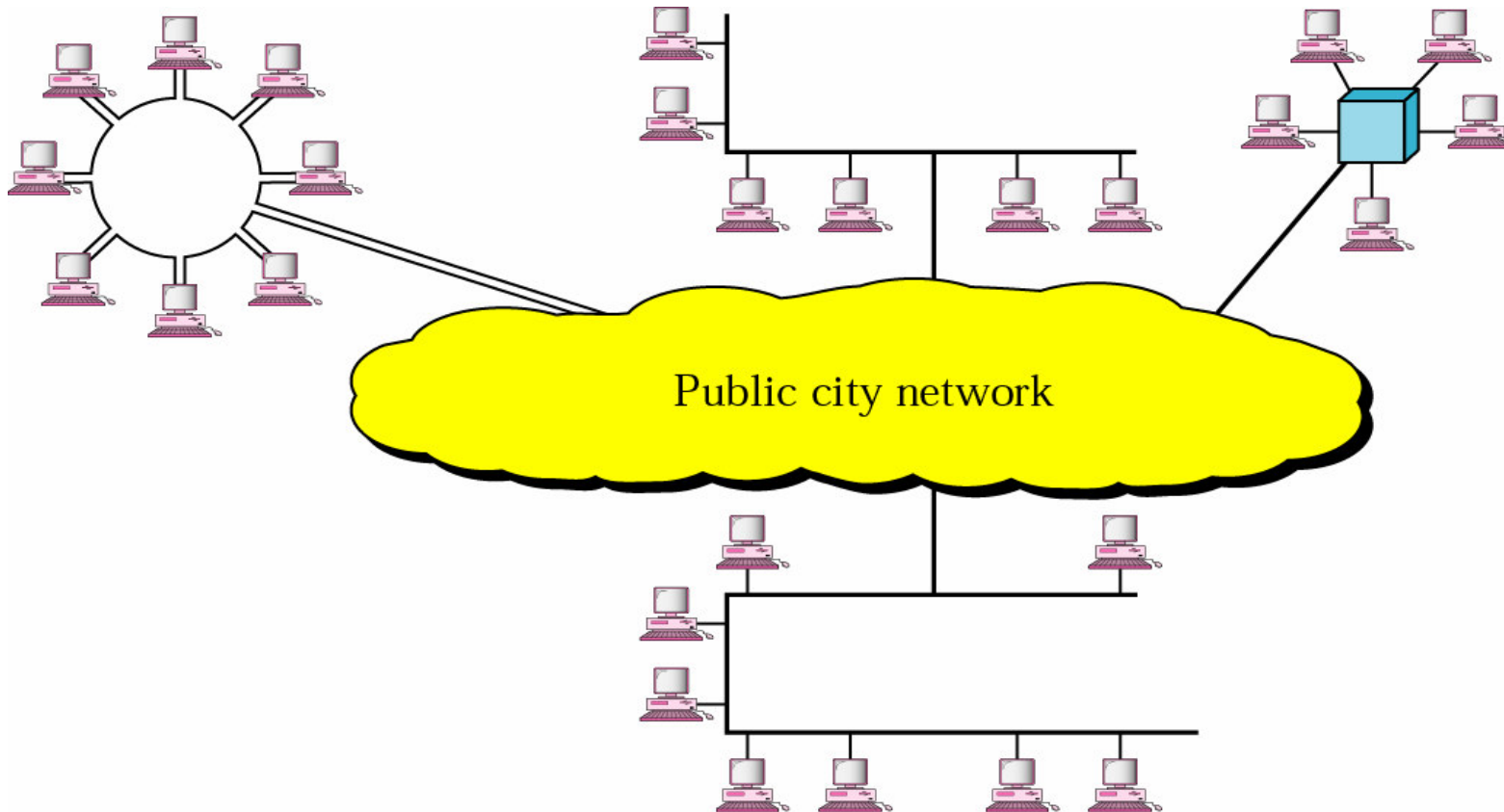


Figure 1.15 WAN

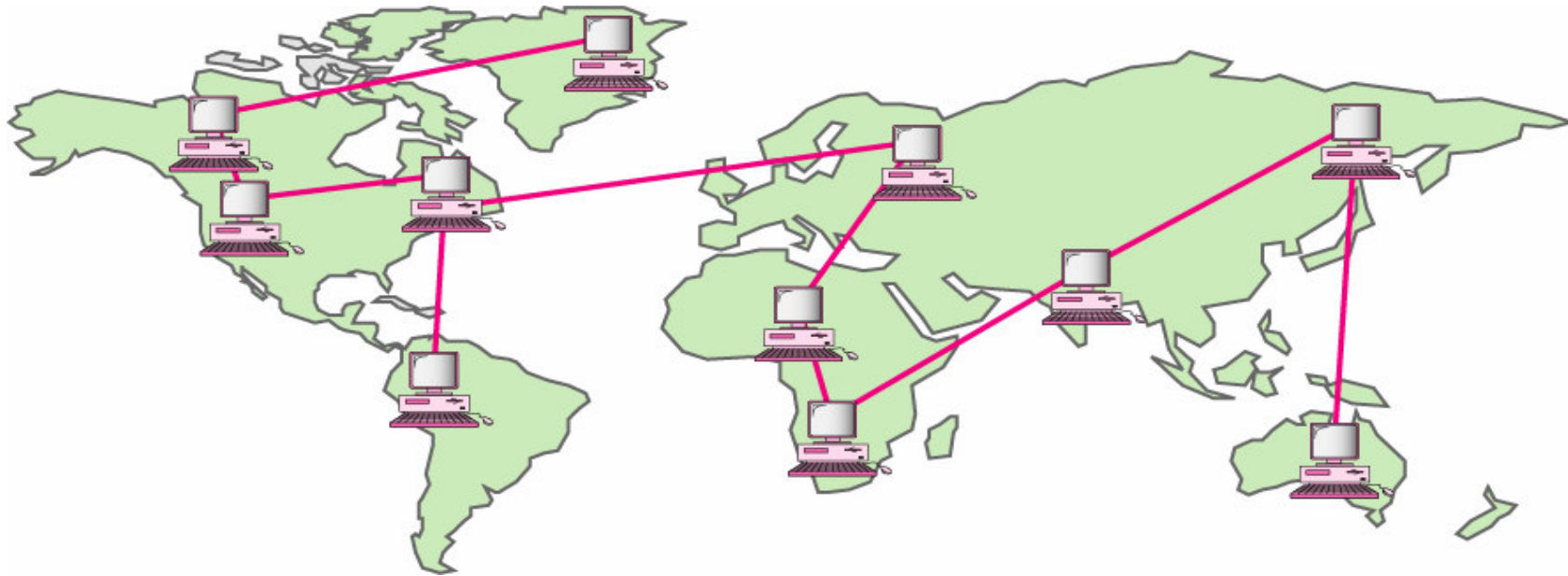


Figure 2.1 Protocols *Sending a letter*

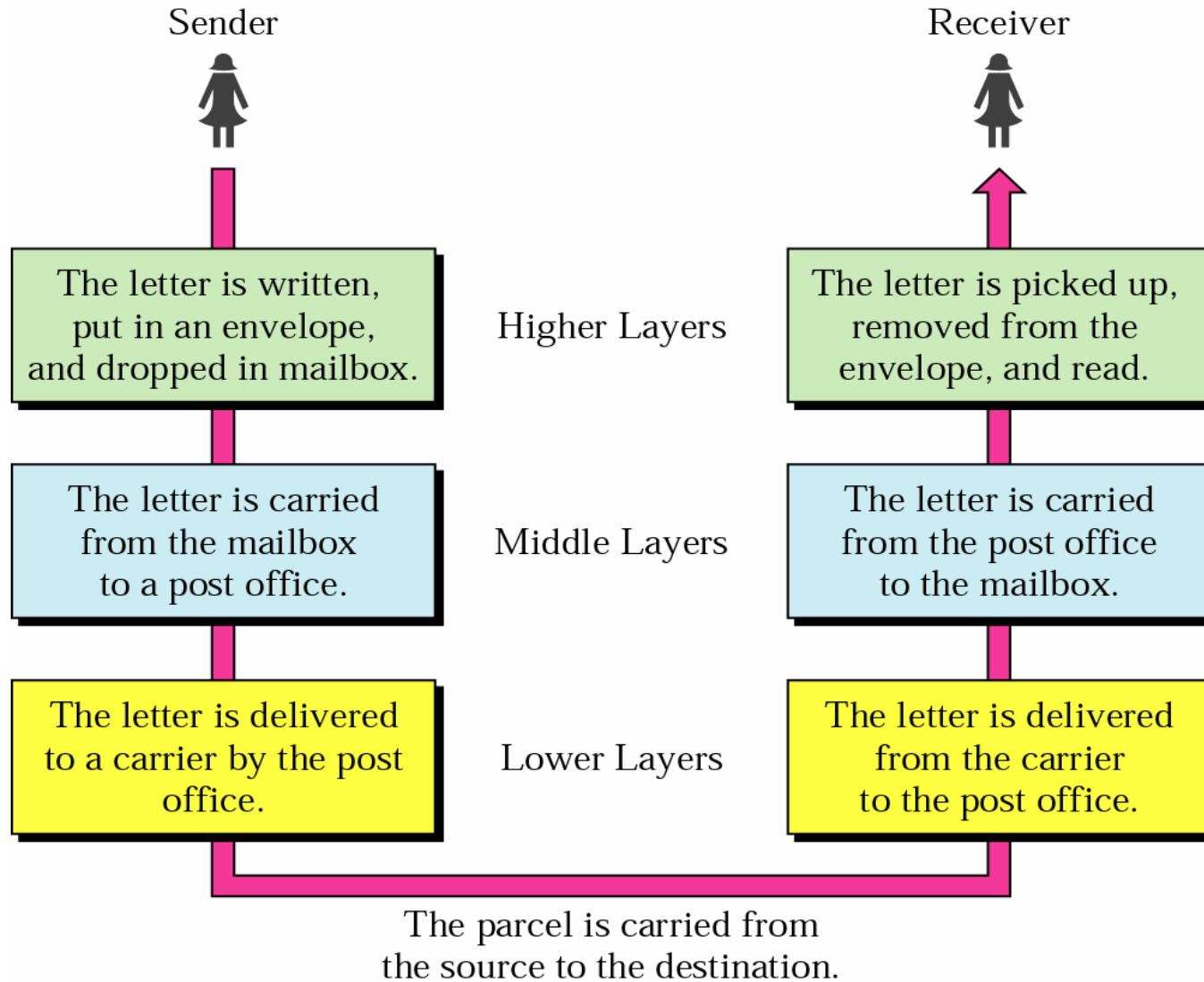




Figure 2.2 *Internet layers*

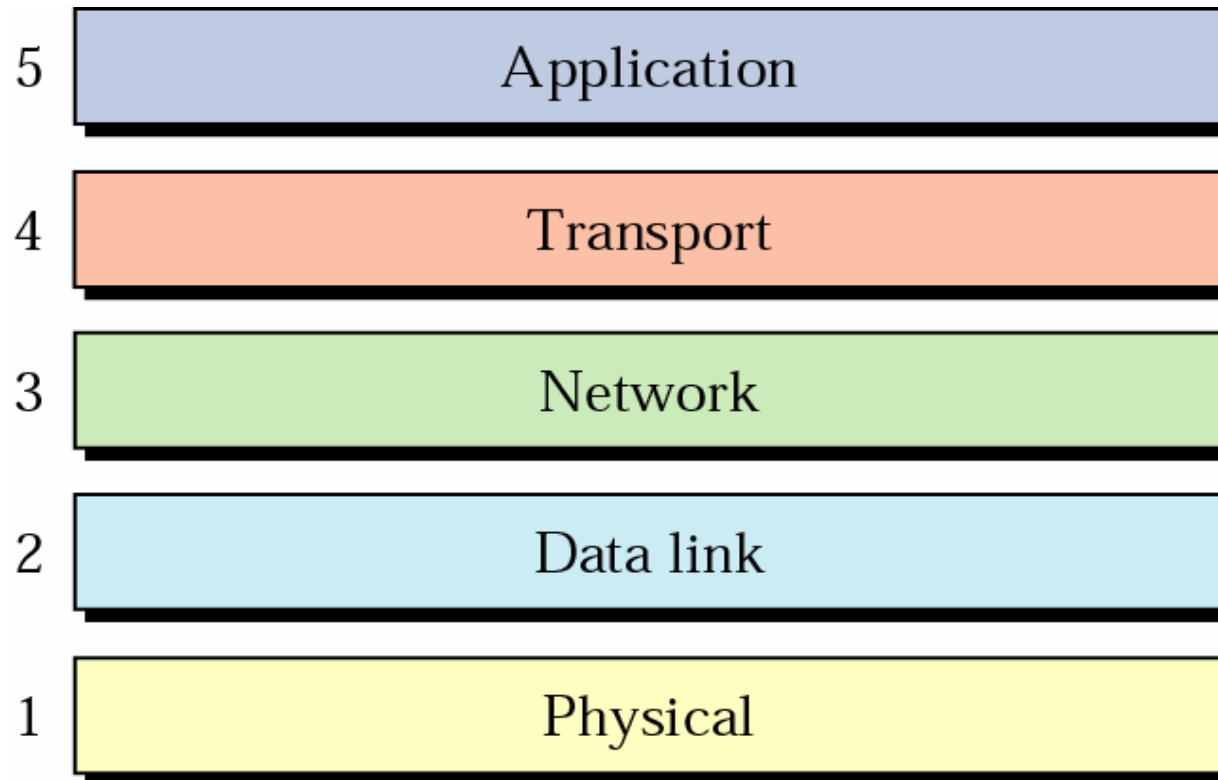


Figure 2.3 Peer-to-peer processes

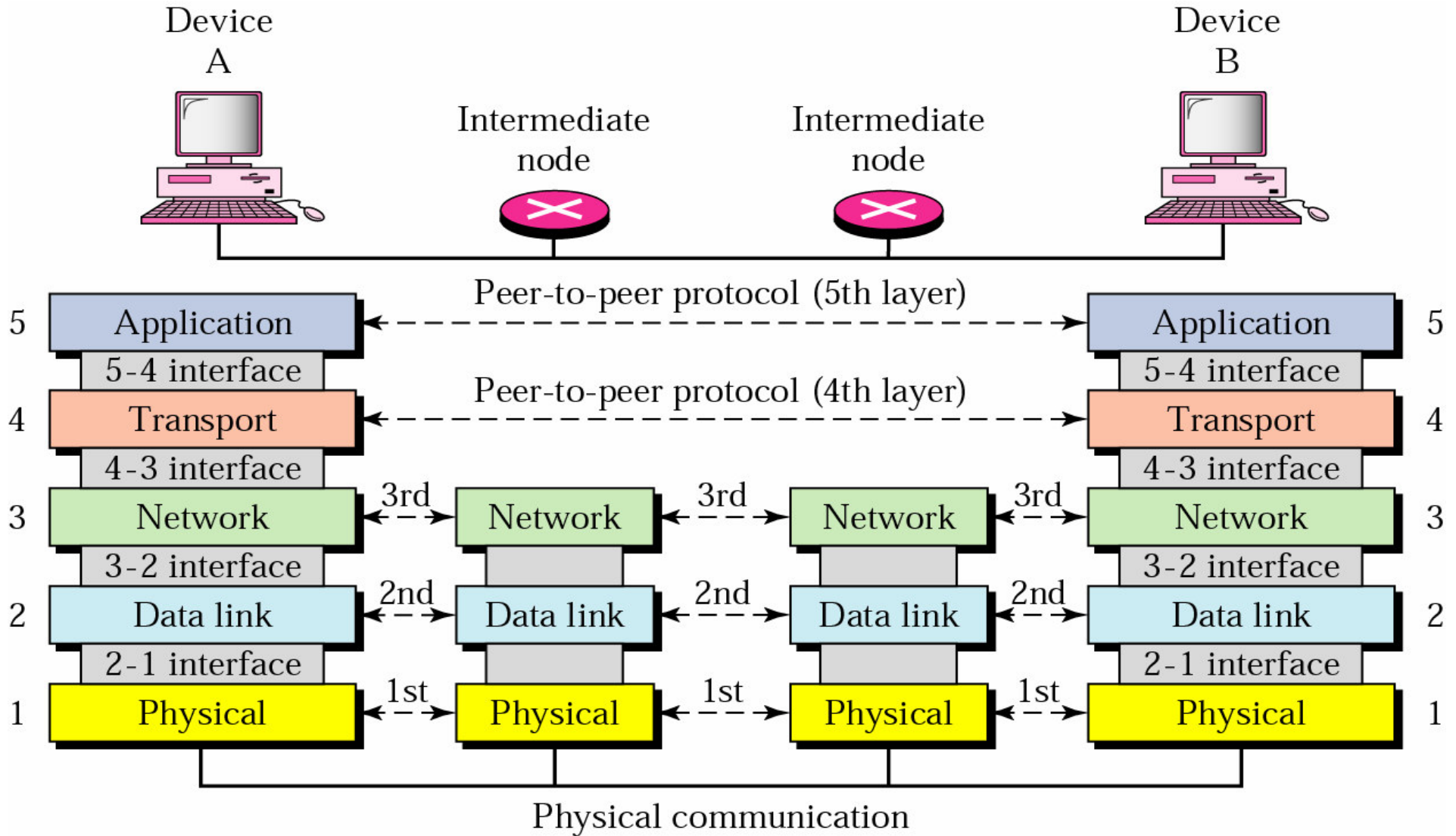
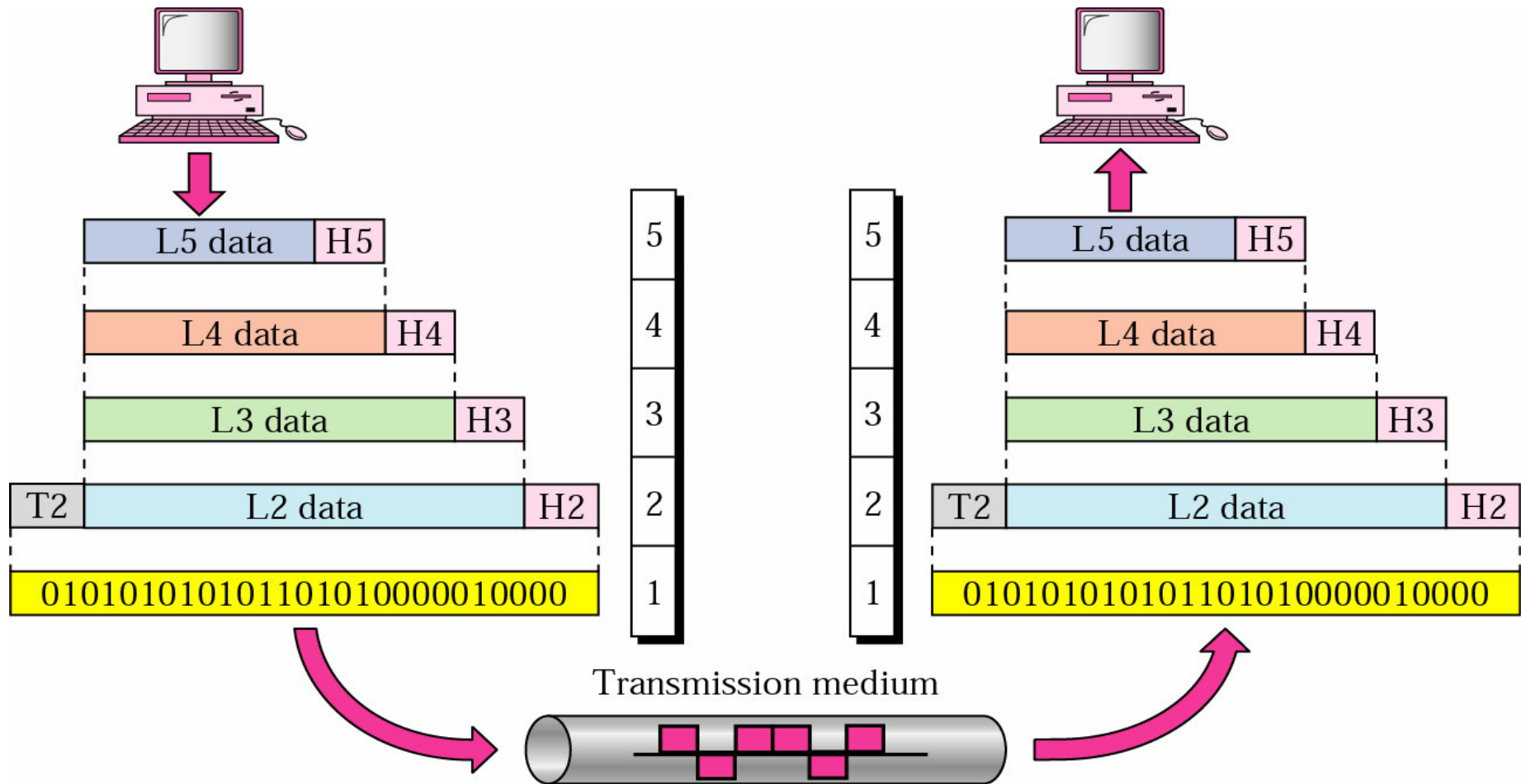


Figure 2.4 *An exchange using the Internet model*



The physical layer is responsible for transmitting individual bits from one node to the next.

The data link layer is responsible for transmitting frames from one node to the next.

The network layer is responsible for the delivery of packets from the original source to the final destination.

Figure 2.8 *Example 1*

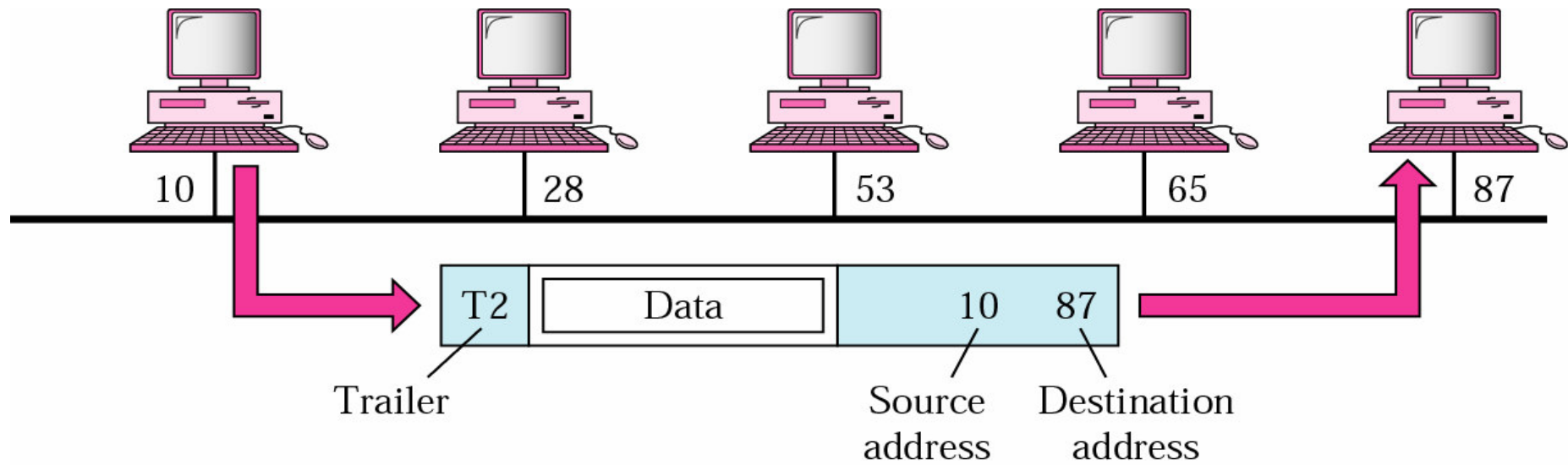


Figure 2.10 *Source-to-destination delivery*

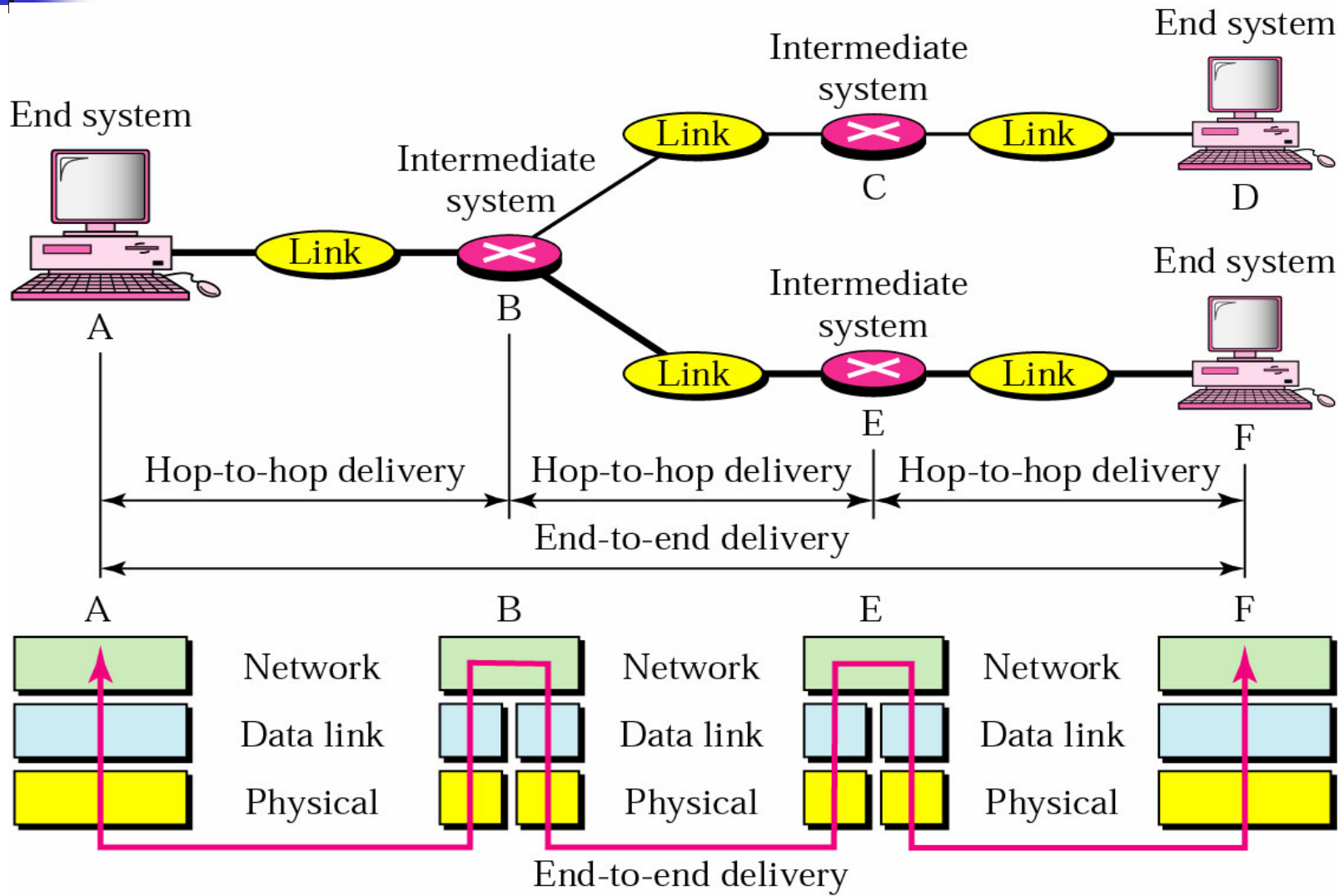


Figure 2.11 *Example 2*

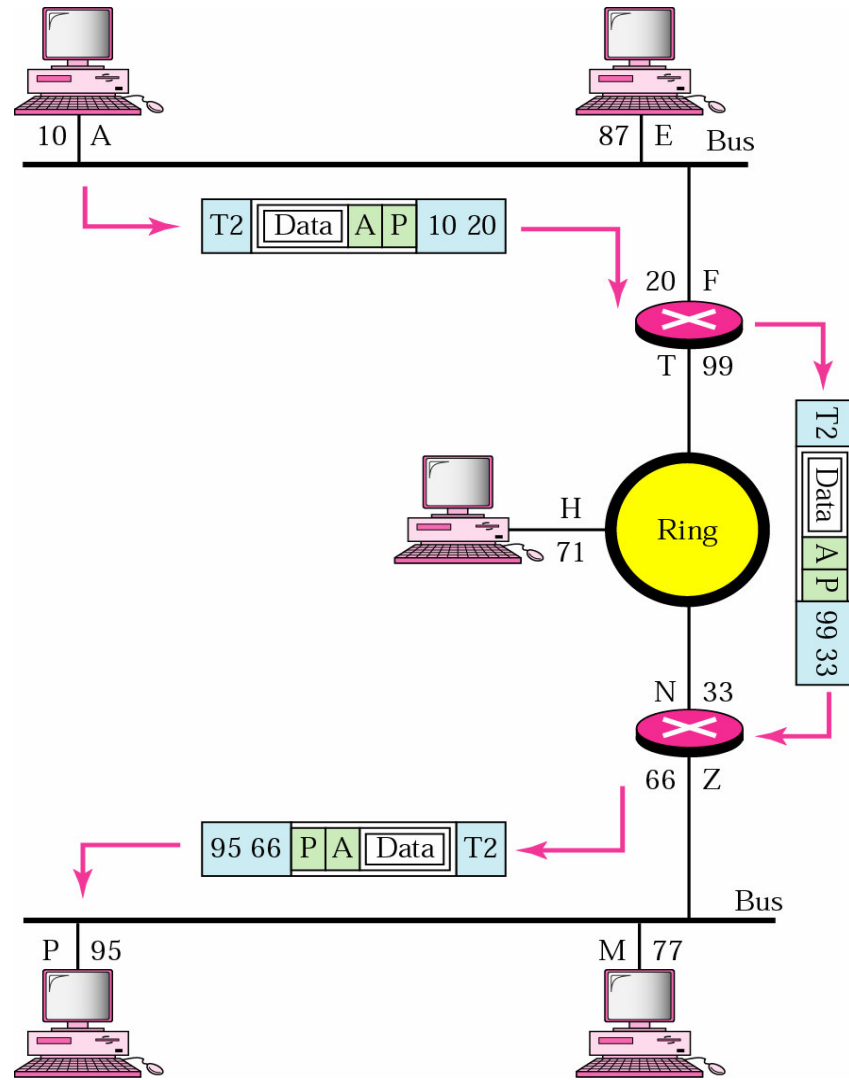
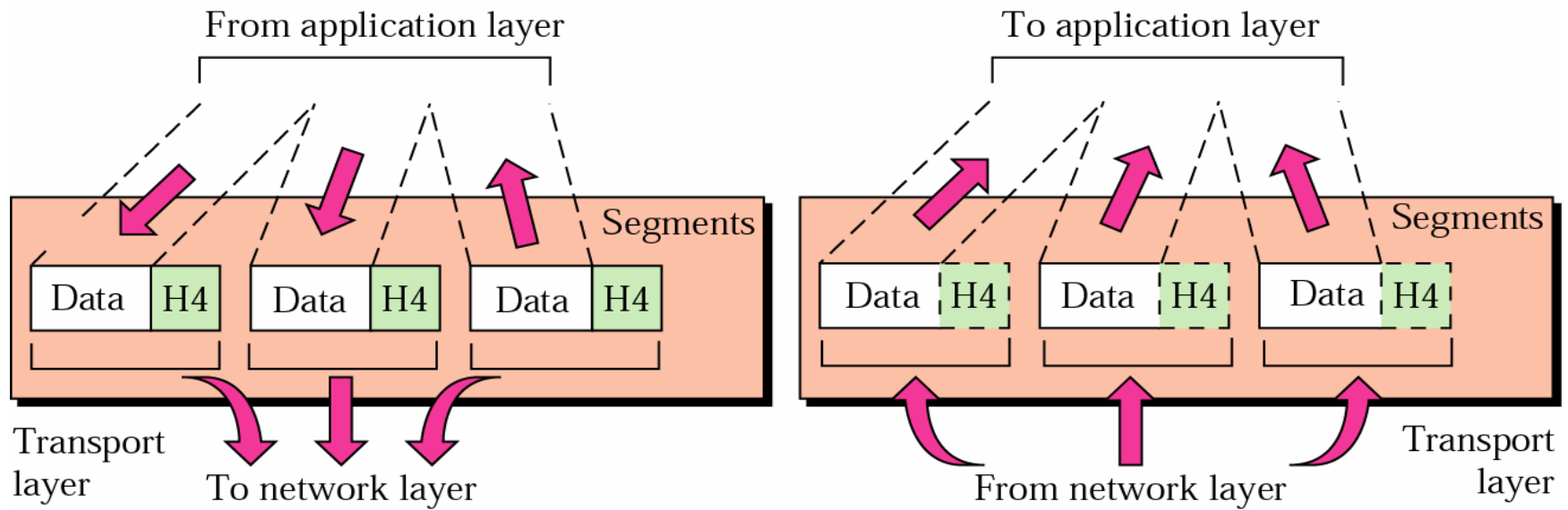
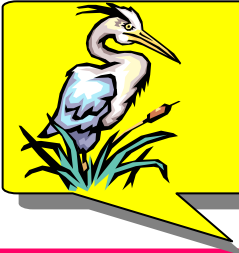


Figure 2.12 *Transport layer*





Note:

The transport layer is responsible for delivery of a message from one process to another.

Figure 2.14 *Example 3*

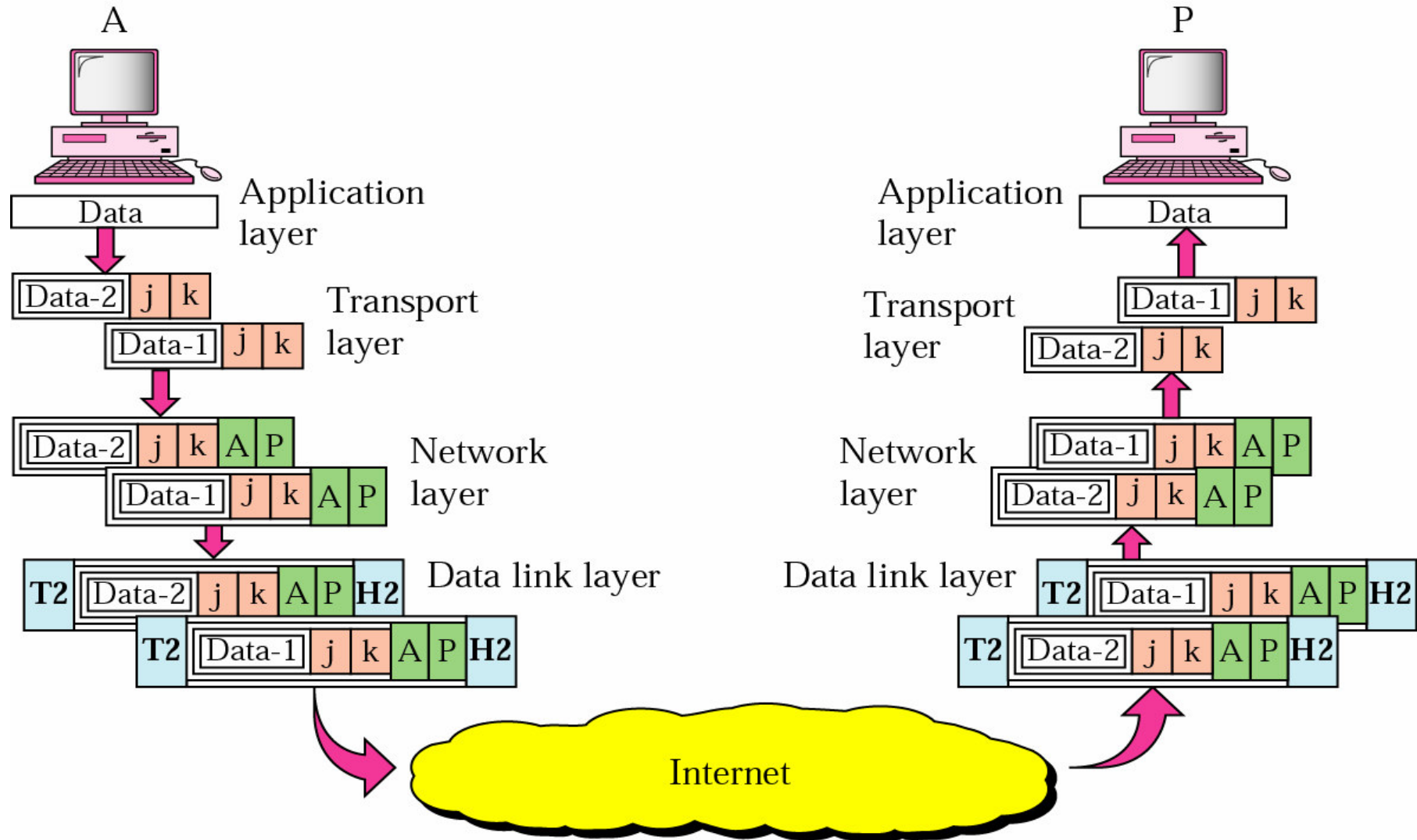
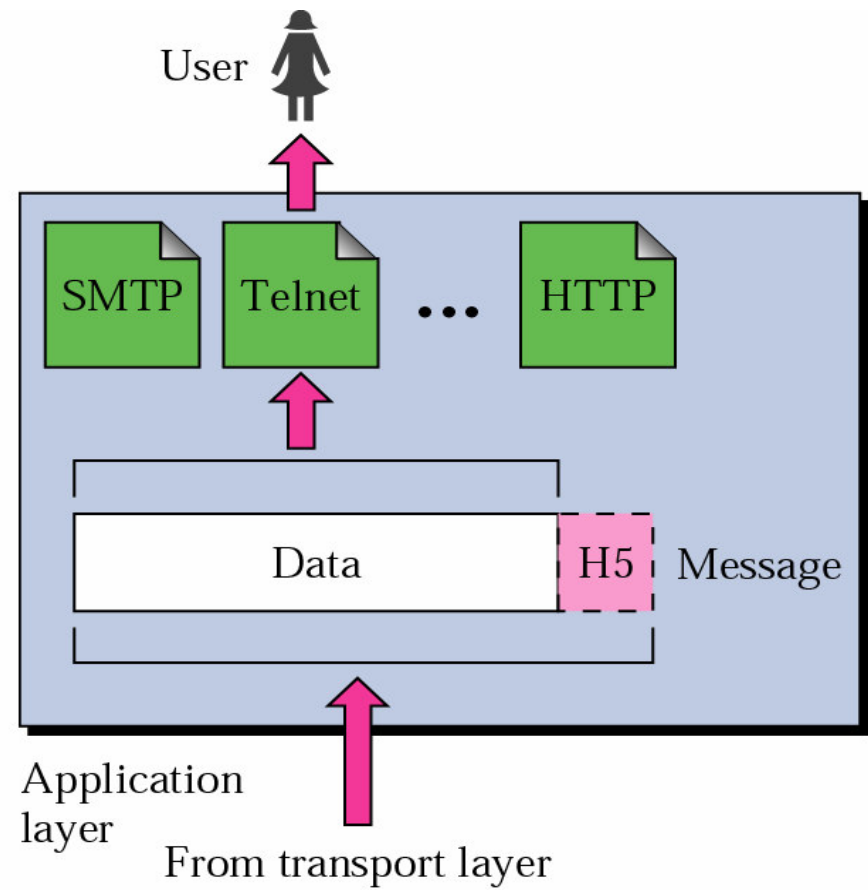
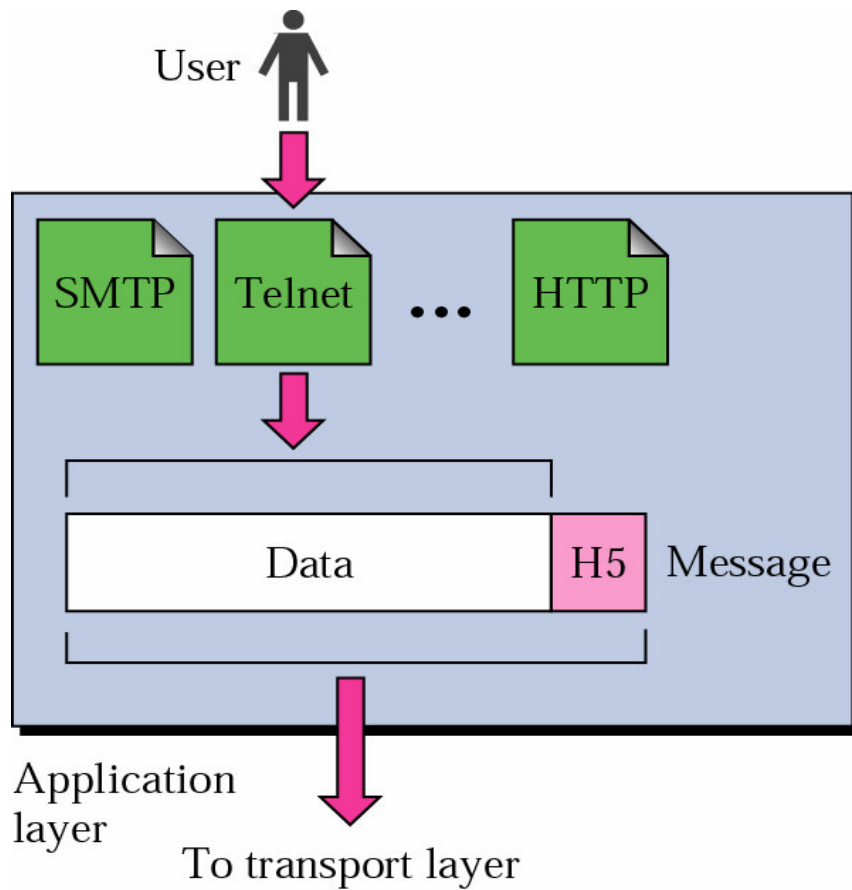
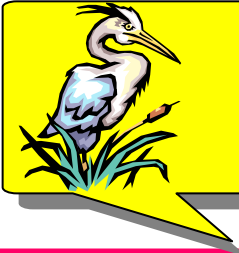


Figure 2.15 *Application layer*

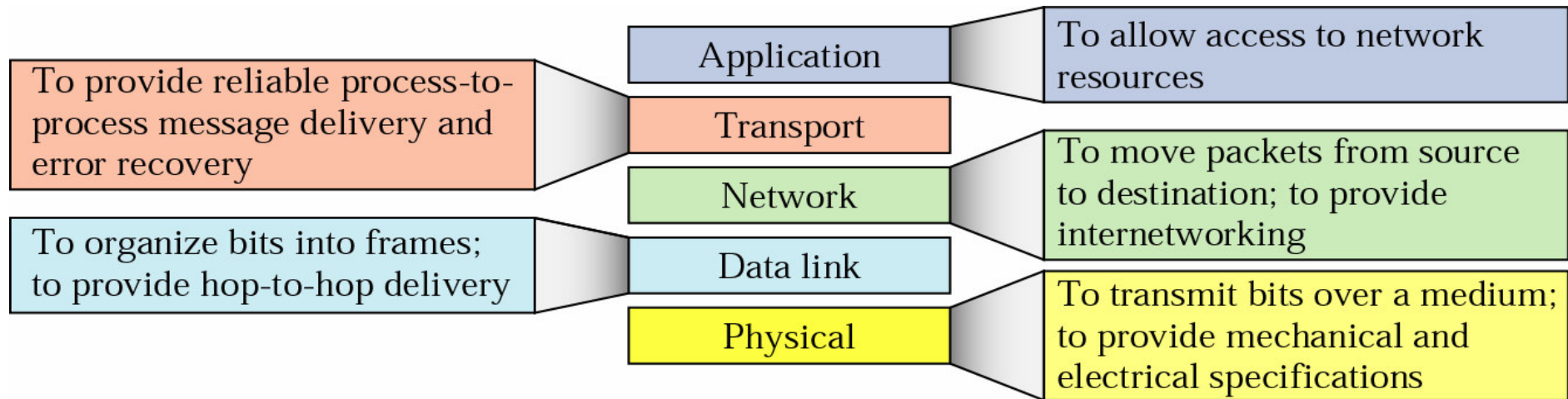


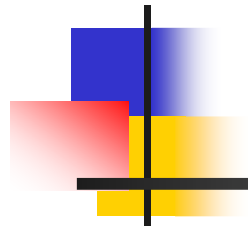


Note:

*The application layer is responsible
for providing services to the user.*

Figure 2.16 *Summary of duties*





Thank you
